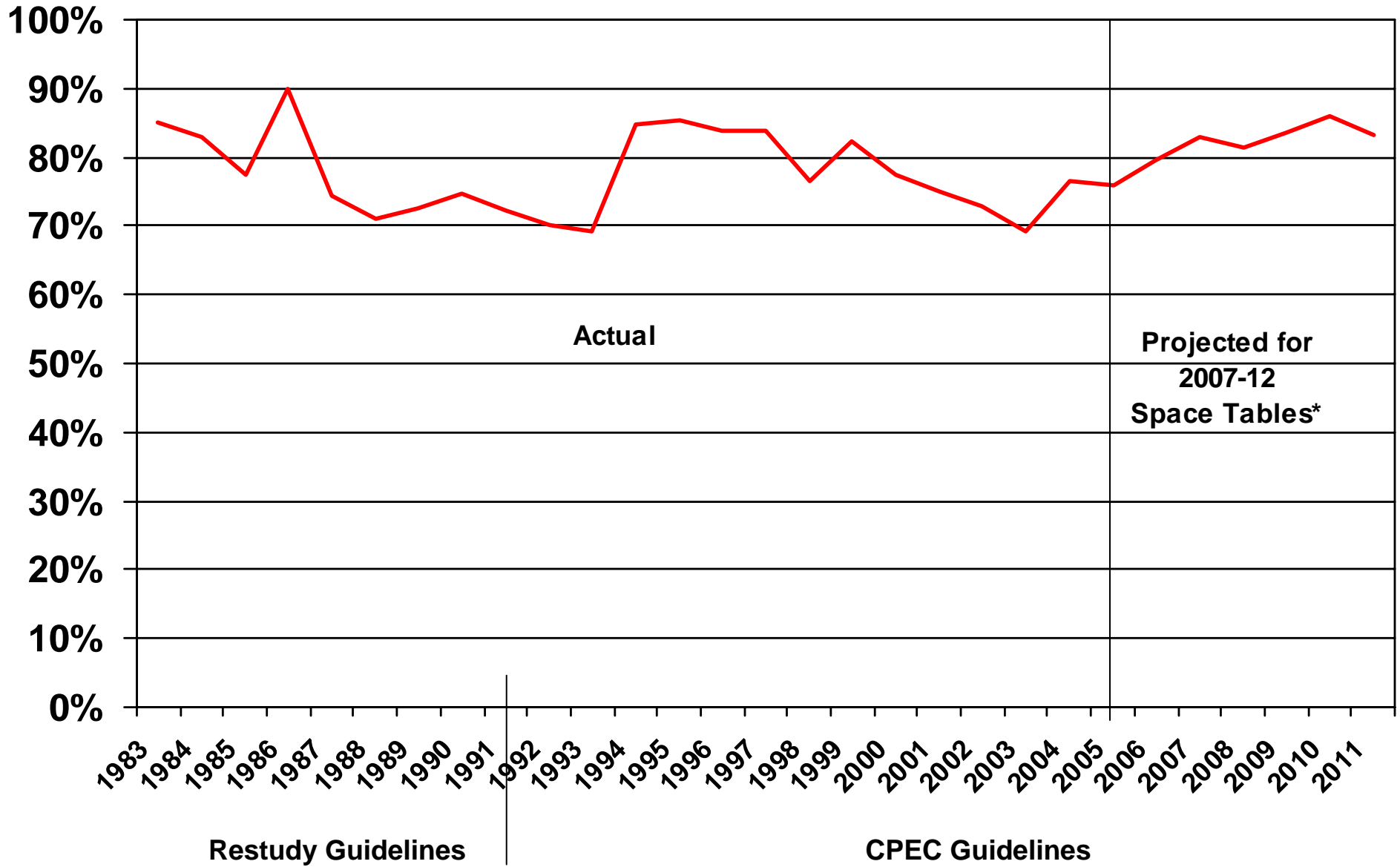
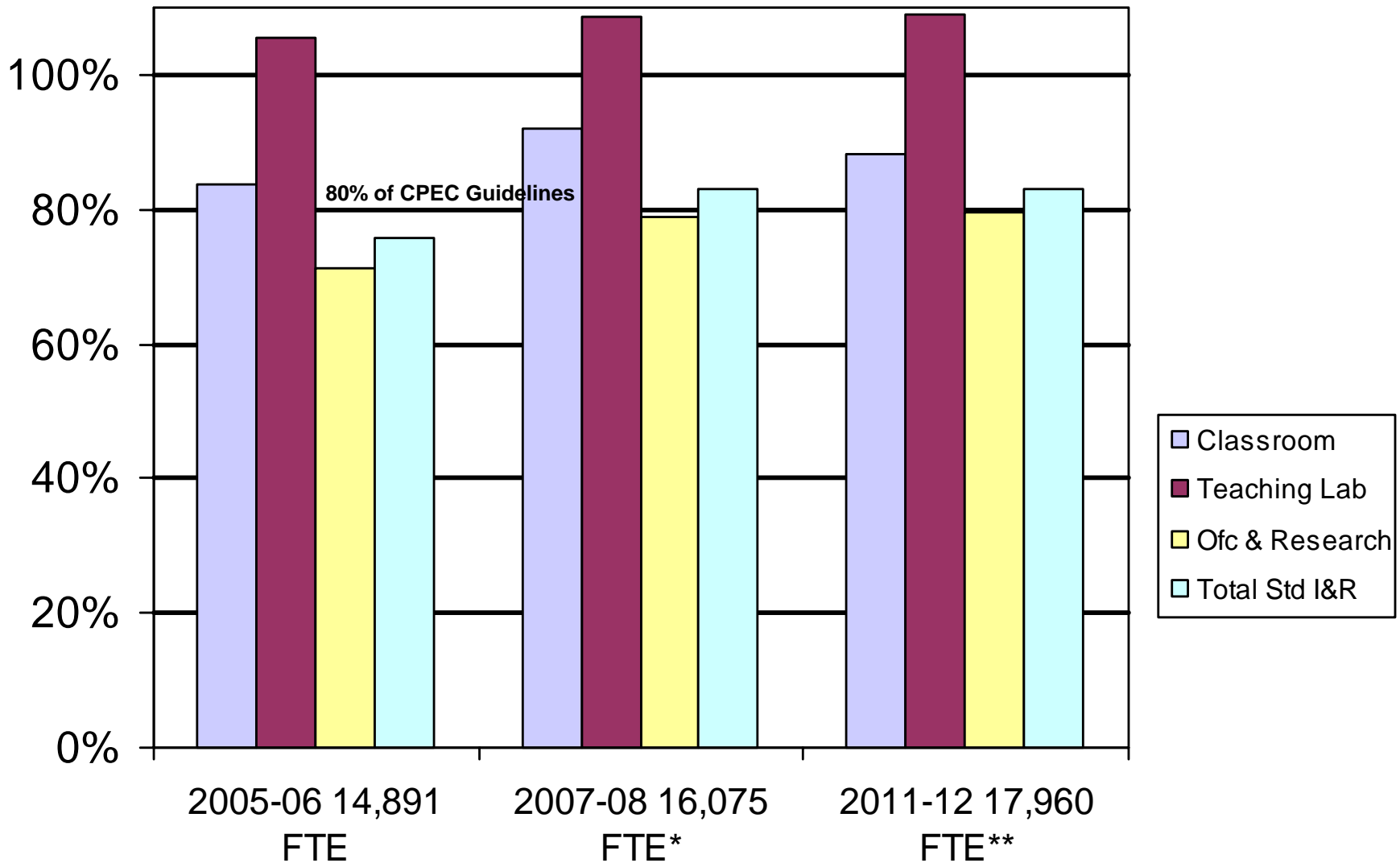


**Chart 3-1  
UCSC Space Inventory Comparison to CPEC Guidelines**



\*Adjusted for summer enrollments.

**Chart 3-3**  
**UCSC Current, Planned, and Estimated Space by Type of Space**  
**Relative to CPEC Guidelines (Based on 2007-12 Space Tables)**

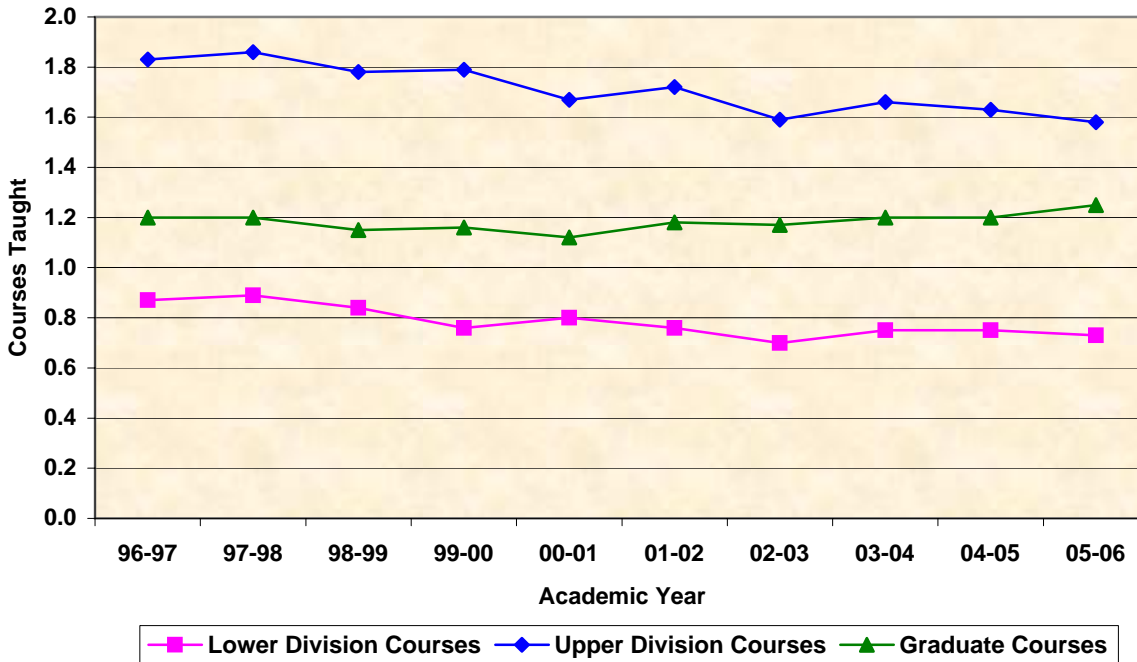


\* Includes projects planned for completion by 2007-08 (Physical Sciences Building & Humanities & Social Sciences Facility). Space tables based on *budgeted* enrollment numbers, which include summer and off-campus enrollments.

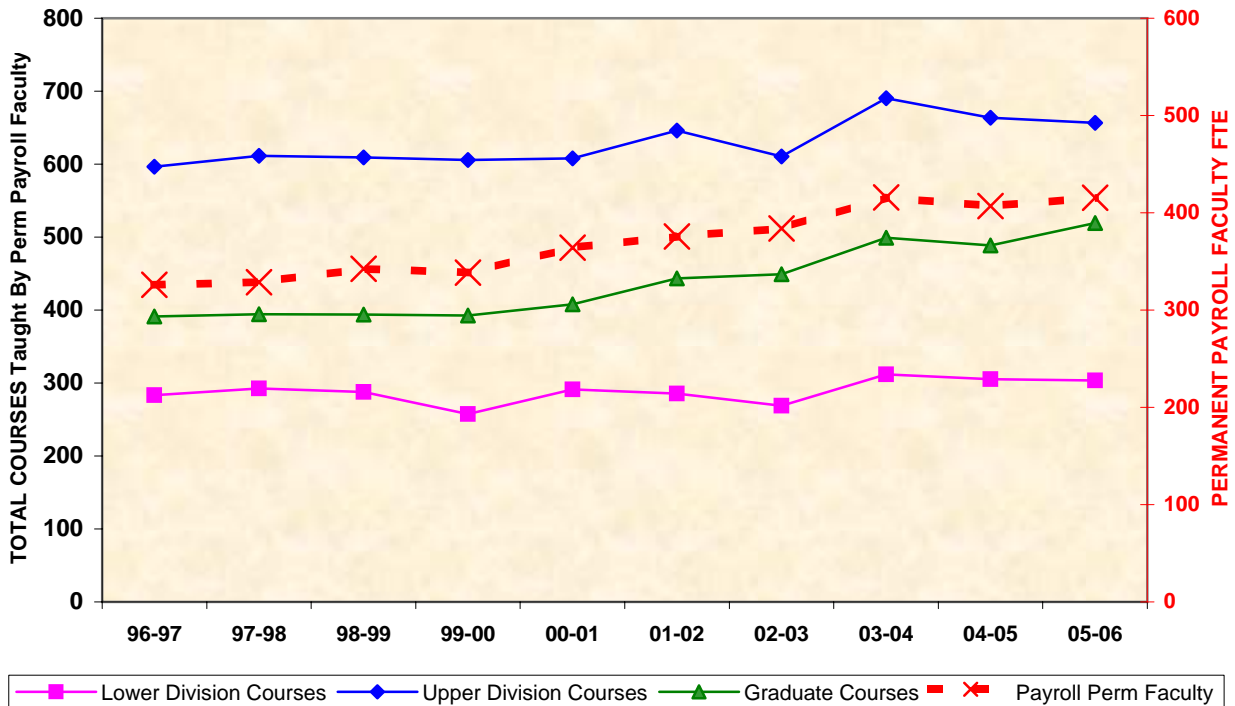
\*\*Includes above & Digital Arts Facility, McHenry Project, & Biomedical Sciences Facility planned for completion in 2008, 2009, & 2010 respectively.

## FACULTY WORKLOAD AND INVESTMENT IN DIRECT INSTRUCTION

### 2A - COURSES TAUGHT PER PERMANENT PAYROLL FACULTY FTE BY COURSE LEVEL



### 2B - CHANGE IN TOTAL COURSES TAUGHT BY PERMANENT FACULTY ON PAYROLL

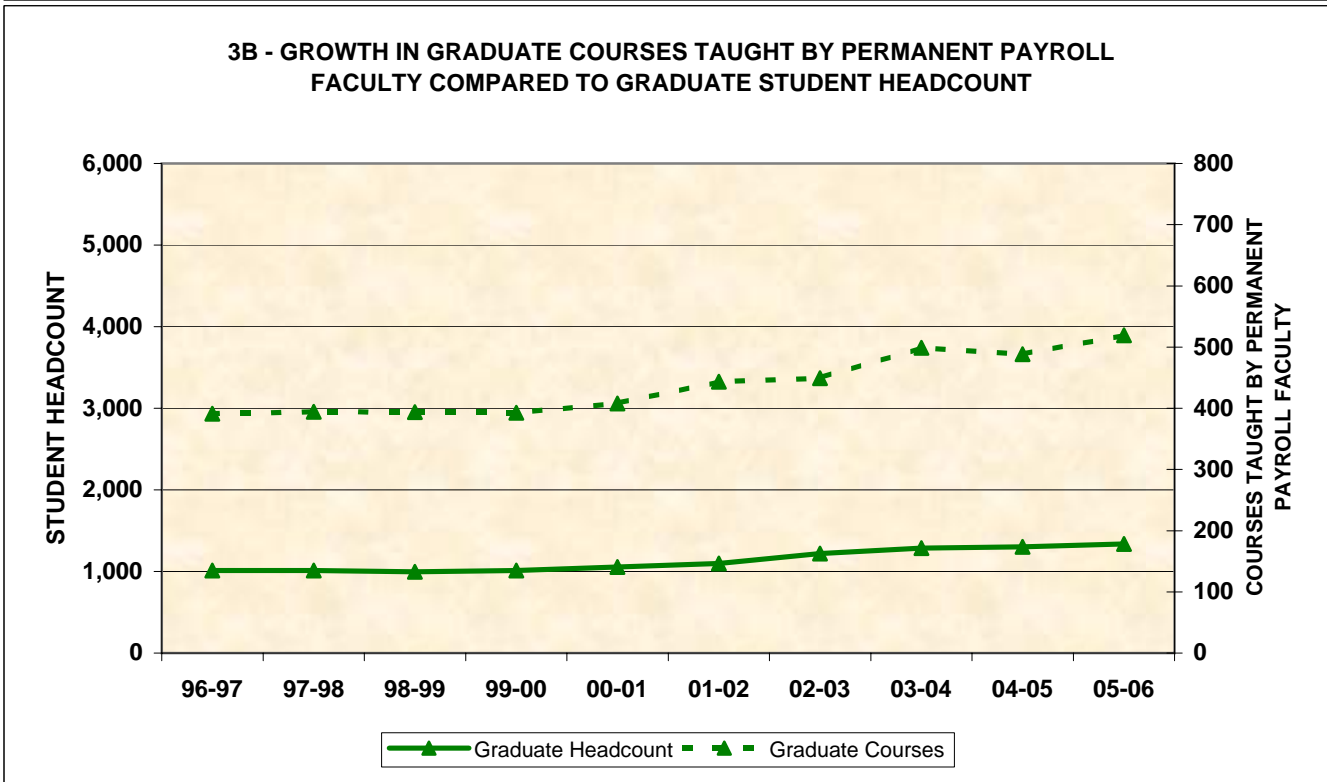
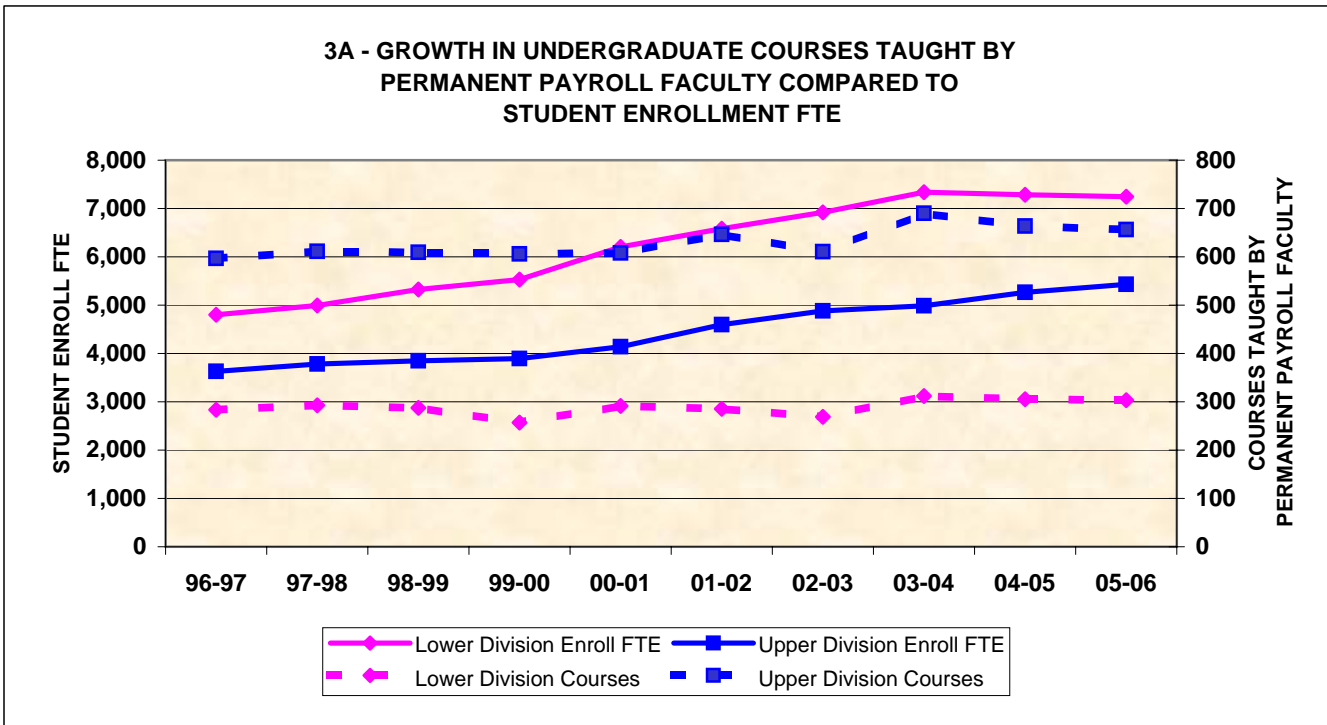


**Permanent Payroll Faculty FTE** - Sum of permanent faculty on payroll (ladder faculty and security of employment lecturers MINUS leaves and sabbaticals)

**Course Counts** - Count of courses taught by ladder rank faculty; normalized to 5-unit course;

E.g.a 2-unit course would equal .4 courses in this count

## FACULTY WORKLOAD AND INVESTMENT IN DIRECT INSTRUCTION



**Permanent Payroll Faculty FTE** - Sum of permanent faculty on payroll (ladder faculty and security of employment lecturers MINUS leaves and sabbaticals)

**Course Counts** - Count of courses taught by ladder rank faculty; normalized to 5-unit course; E.g.a 2-unit course would equal .4 courses in this count

**Student Enrollment FTE:** In this context, lower and upper division based on SCH in courses at each level divided by 45 (SCH per UG FTE); graduate students based on 3/4 average headcount